

CHEYNE WALK



LONDON SW3

CHEYNE WALK

An enchanting Grade II listed Georgian period house, enjoying wonderful uninterrupted south-facing views over the River Thames and Albert Bridge.

Located in the favoured section, east of Oakley Street, the house is positioned well back from the Embankment and immediately to the west of the private lane leading to Cheyne Mews, on the site of Henry VIII's Manor House.



Extensive and flexible reception space boasts stunning views both south, over the river towards Battersea Park, and to the rear through to a spectacular 58' garden. Exquisitely refurbished and immaculately designed, this house offers exceptional and luxurious accommodation.







Cheyne Walk is located in Old Chelsea, beside the River Thames and enjoys easy access to the many and varied amenities of the King's Road, including an excellent range of shopping, transport and recreational facilities, along with the green, open spaces of Royal Hospital's Burton's Court, as well as Battersea Park.





Entrance Hall • Drawing Room • Reception Room • Dining Room • Kitchen • Study
Master Bedroom with en suite Bathroom and Dressing Room • 4 Further Bedrooms
2 Further Bathrooms • Laundry Room • 58' Garden

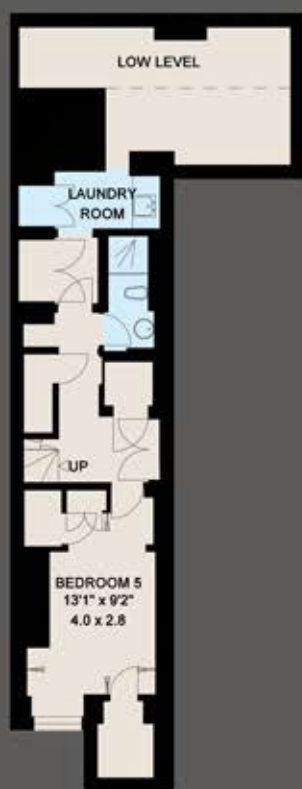


Tenure: Freehold

Price: On Application

Local Authority: The Royal Borough of Kensington and Chelsea

Gross Internal Area
(Excluding Low Level)
306 Square Metres
3,304 Square Feet



Lower
Ground
Floor



Ground Floor



First Floor



Third Floor



Second Floor



In accordance with the Property Mis-Description Act 1991, the following details have been prepared in good faith, and are not intended to constitute part of an offer or contract. Any information contained herein (whether in the text, plans or photographs) is given in good faith but should not be relied upon as being a statement of representation of fact. Nothing in these Particulars shall be deemed to be a statement that the property is in good condition or otherwise nor that any services or facilities are in good working order. Any measurements of distances referred to herein are approximate only. June 2013

300812